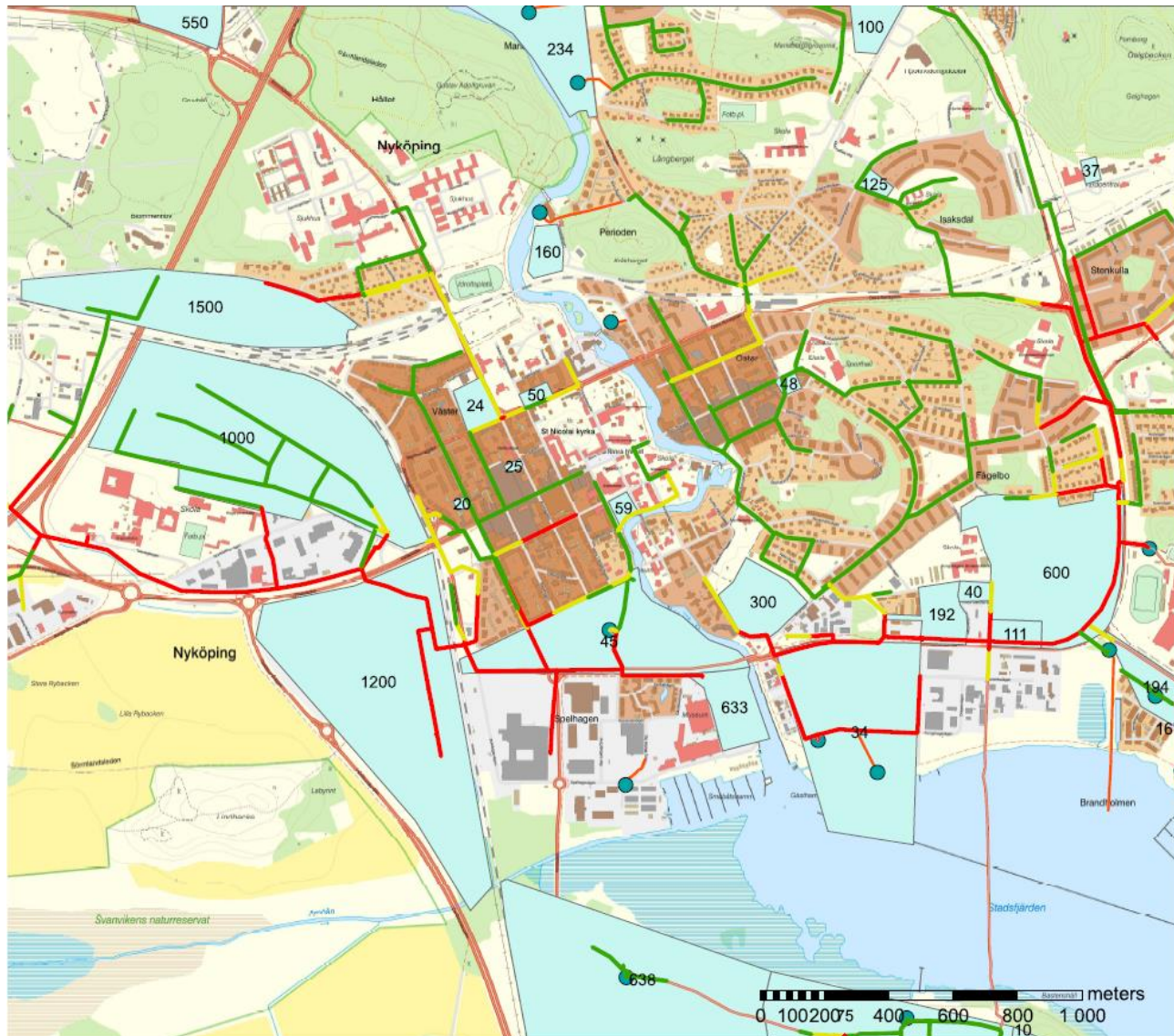


# Hydraulisk modell spillvatten

Centralorten

# Ledningskapacitet - nuläge



## TECKENFÖRKLARING

### Results

— 0,792000 - 0,500000

— 0,500001 - 1,500000

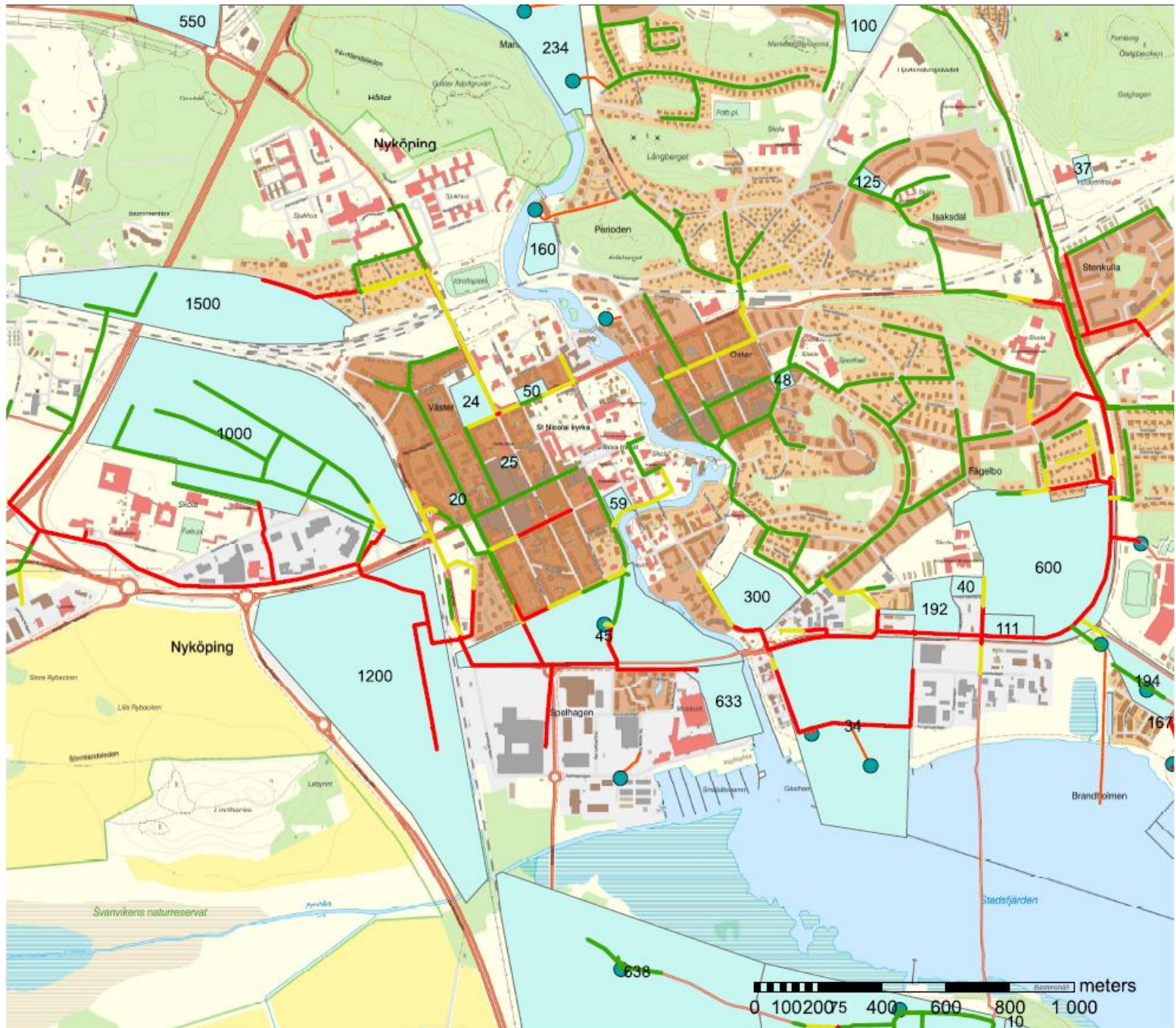
— 1,500001 - 5,000000

— 5,000001 - 42,445697

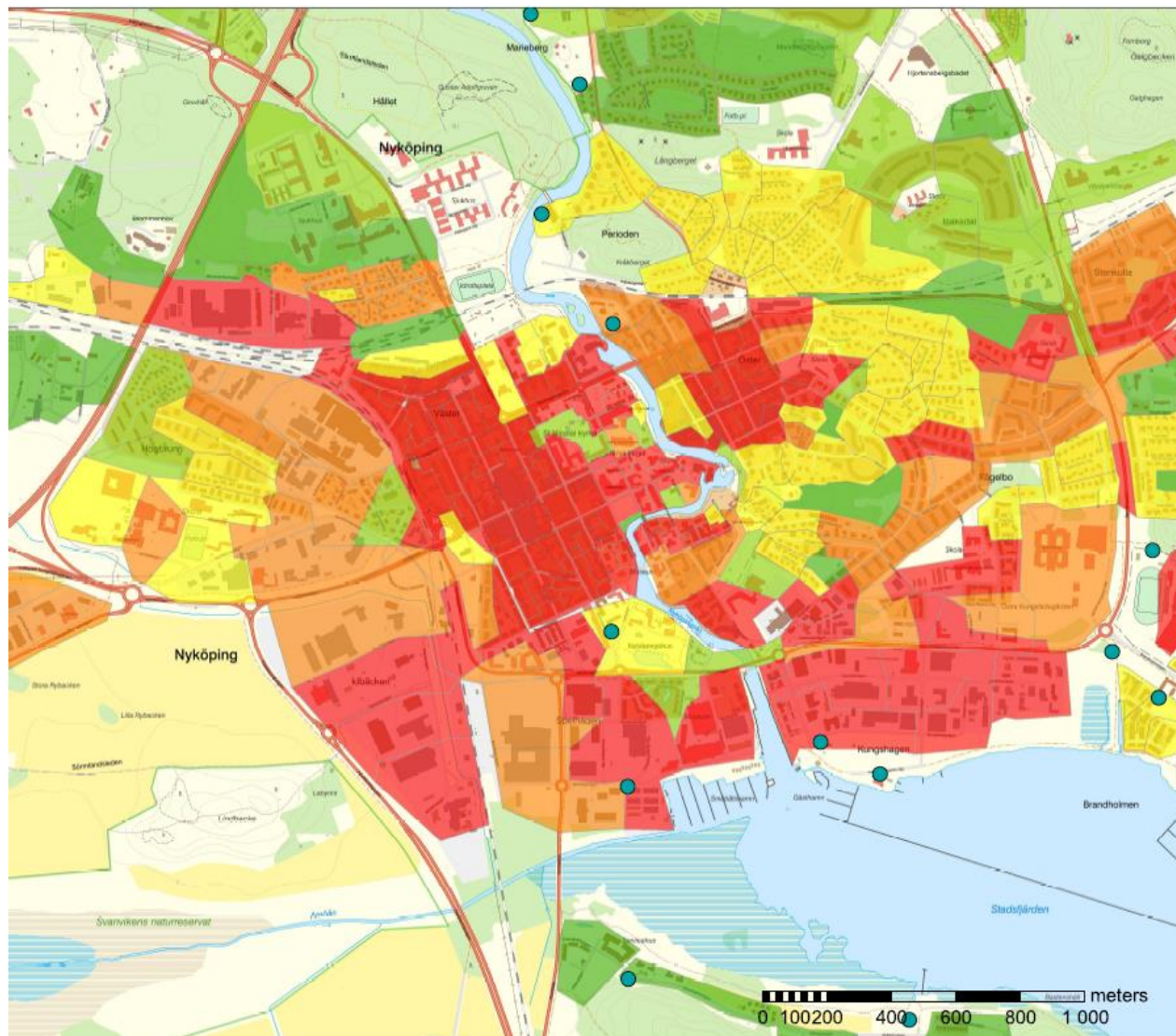
● Spillvatten\_pumpstation\_POINT

— Spillvatten\_tryckledning\_ARC

□ Framtida\_bebyggelse\_3



# Felkopplade ytor



## TECKENFÖRKLARING

● Spillvatten\_pumpstation\_POINT

### % felkopplade ytor

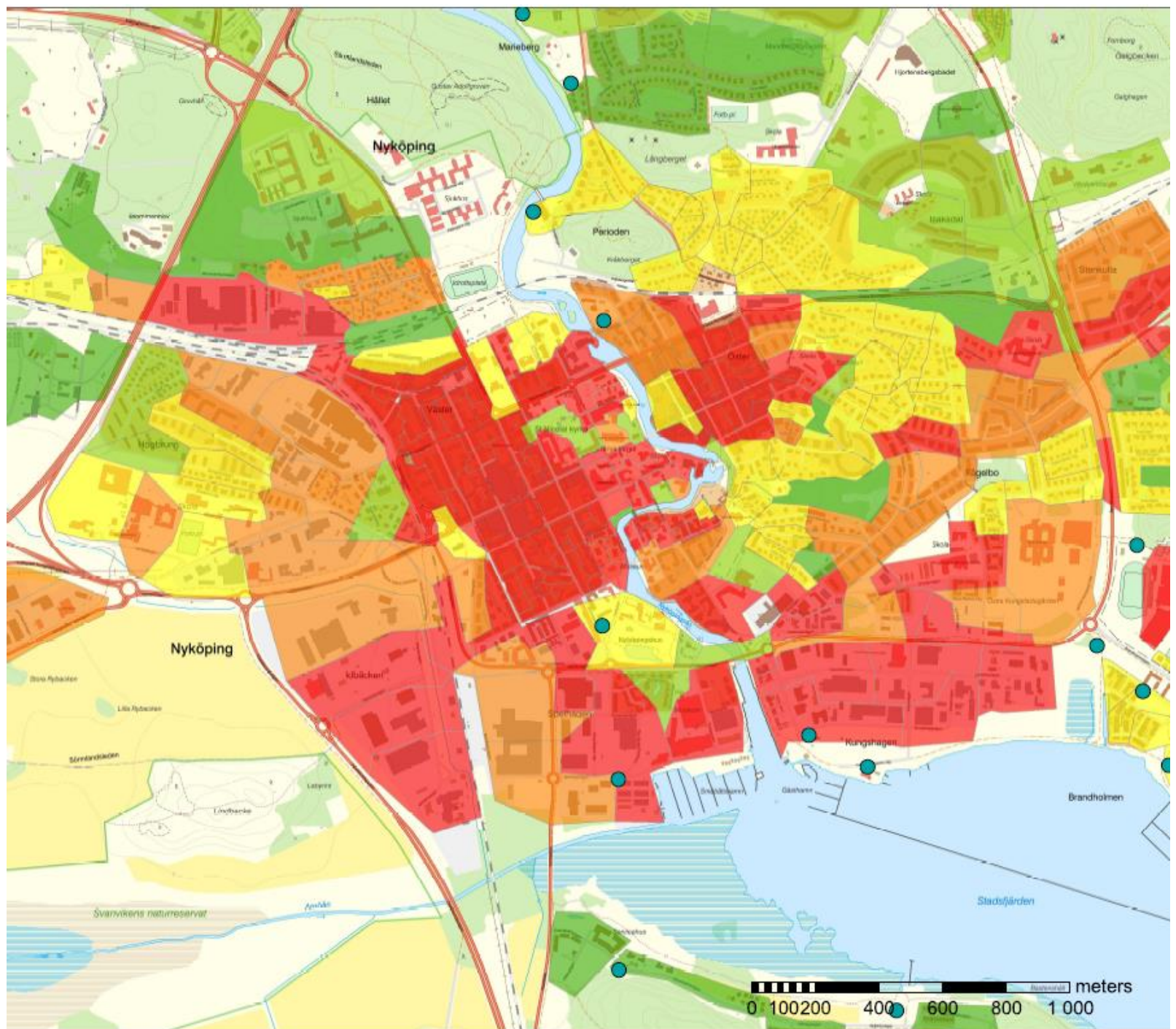
0,000000 - 1,000000

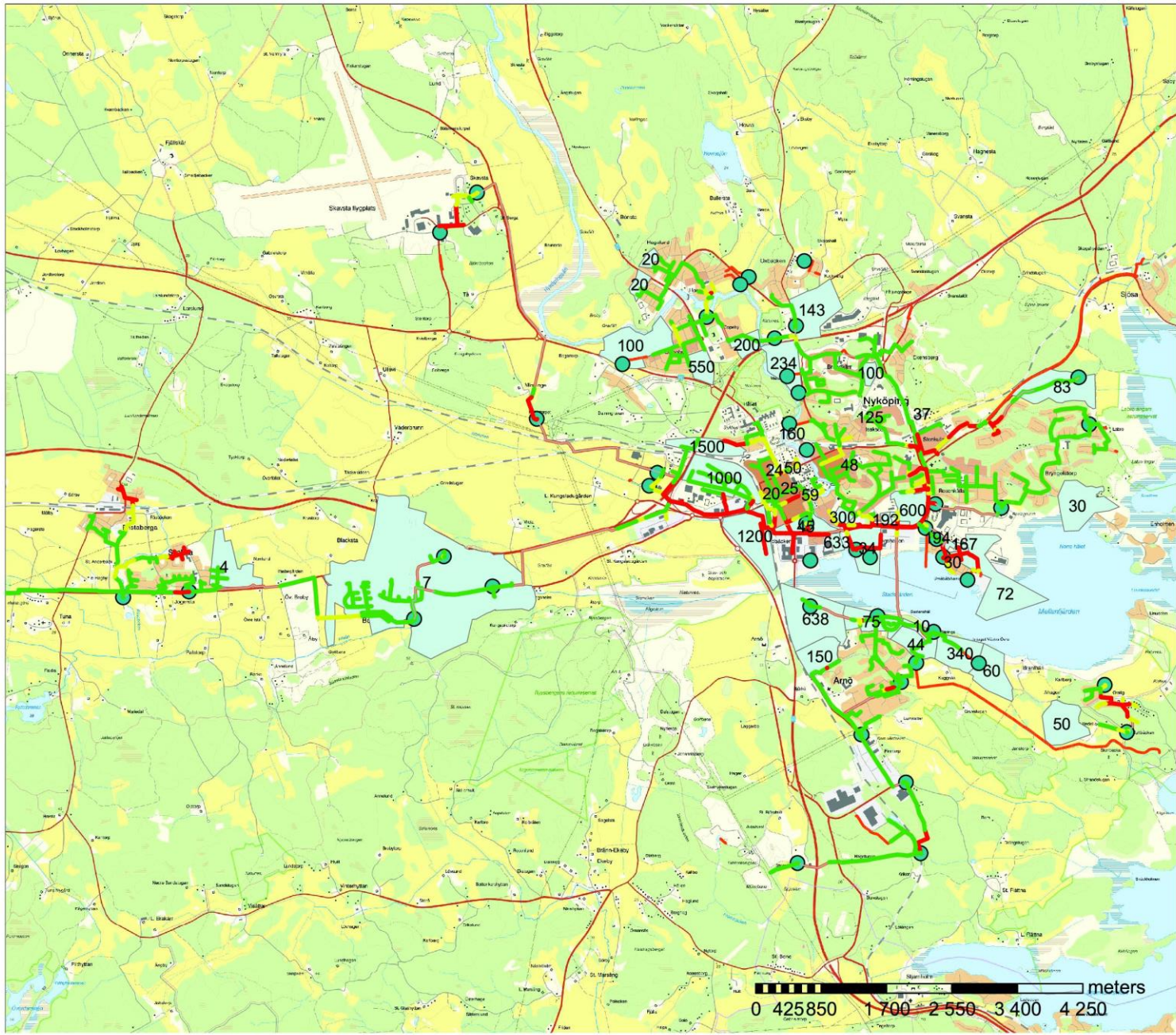
1,000001 - 2,000000

2,000001 - 3,000000

3,000001 - 4,000000

4,000001 - 7,524000





**TECKENFÖRKLARING**

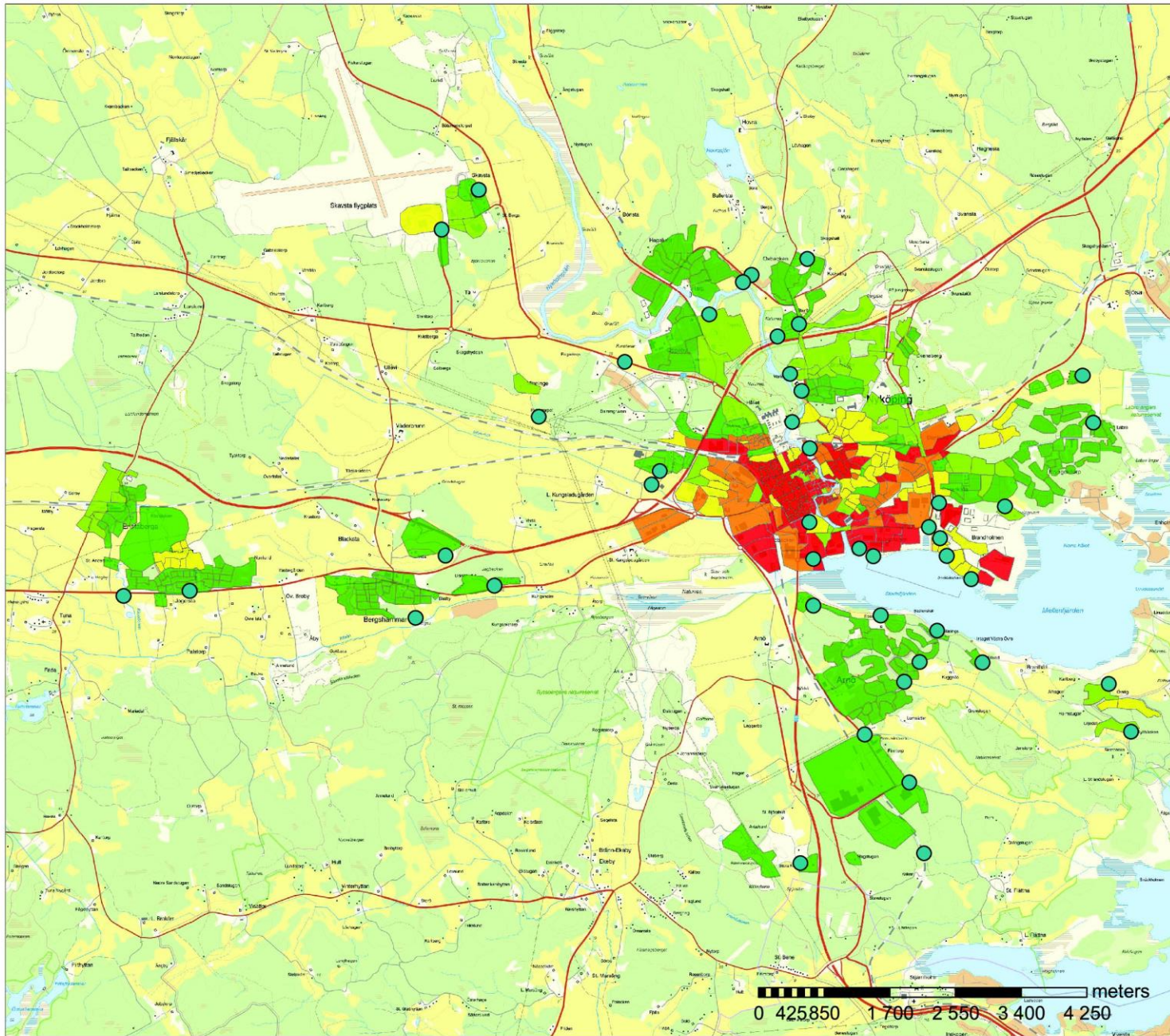


**Results**

- -0,792000 - 0,500000
- 0,500001 - 1,500000
- 1,500001 - 5,000000
- 5,000001 - 42,445697
- Spillvatten\_pumpstation\_POINT
- Spillvatten\_tryckledning\_ARC
- Framtida\_bebyggelse\_3

**Koordinatsystem**  
 Koordinater i SWEREF 99 16 30





### TECKENFÖRKLARING



● Spillvatten\_pumpstation\_POINT

#### % felkopplade ytor

- 0,000000 - 1,000000
- 1,000001 - 2,000000
- 2,000001 - 3,000000
- 3,000001 - 4,000000
- 4,000001 - 7,524000

#### Koordinatsystem

Koordinater i SWEREF 99 16 30

